



India Meteorological Department

(Ministry of Earth Sciences)

NATIONAL BULLETIN NO.: 11 (BOB/04/2024)

TIME OF ISSUE: 0840 HOURS IST

DATED: 10.09.2024

FROM: INDIA METEOROLOGICAL DEPARTMENT (FAX NO. 24643965/24699216/24623220)
TO: CONTROL ROOM, NDM, MINISTRY OF HOME AFFAIRS (FAX.NO. 23093750)
CONTROL ROOM NDMA (FAX.NO. 26701729)
CABINET SECRETARIAT (FAX.NO.23012284, 23018638)
PS TO HON'BLE MINISTER FOR S & T AND EARTH SCIENCES (FAX NO.23316745)
SECRETARY, MOES (FAX NO. 24629777)
H.Q. (INTEGRATED DEFENCE STAFF AND CDS) (FAX NO. 23005137/23005147)
DIRECTOR GENERAL, DOORDARSHAN (23385843)
DIRECTOR GENERAL, AIR (23421105, 23421219)
PIB MOES (FAX NO. 23389042)
UNI (FAX NO. 23355841)
D.G. NATIONAL DISASTER RESPONSE FORCE (NDRF) (FAX NO. 26105912, 2436 3260)
DIRECTOR, PUNCTUALITY, INDIAN RAILWAYS (FAX NO. 23388503)
CHIEF SECRETARY, ODISHA (FAX NO. 0674-2536660)
CHIEF SECRETARY, ANDHRA PRADESH (FAX NO. 0863-2441029, 08645-246600)
CHIEF SECRETARY, JHARKHAND (FAX NO. 0651-2400255)
CHIEF SECRETARY, CHHATTISGARH (FAX NO. 0771-2221206)
CHIEF SECRETARY, MAHARASHTRA (FAX NO. 022-22028594)
CHIEF SECRETARY,UTTAR PRADESH(FAX NO. 52222-39283)
CHIEF SECRETARY, TELANGANA (FAX NO. 040-23453700)

Sub: Depression over North Chhattisgarh & adjoining interior Odisha

The depression over interior Odisha moved west-northwestwards with a speed of 22 kmph during past 6 hours, lay centered at 0530 hours IST of today, the 10th September, 2024 over North Chhattisgarh & adjoining interior Odisha near latitude 21.7°N and longitude 83.3°E, about 90 km west-southwest of Jharsuguda (Odisha), 70 km west-northwest of Sambalpur (Odisha), 120 km east-southeast of Bilaspur (Chhattisgarh) and 170 km east-northeast of Raipur (Chhattisgarh).

It is very likely to move west-northwestwards across north Chhattisgarh and weaken into a well marked low pressure area over Chhattisgarh and adjoining East Madhya Pradesh around evening of 10th September.

Forecast track and intensity are given in the following table:

Date/Time (IST)	Position (Lat. °N/ Long. °E)	Maximum Sustained Surface Wind Speed (Kmph)	Category Of Cyclonic Disturbance
10.09.24/0530	21.7/83.3	40-50 gusting to 60	Depression
10.09.24/1130	22.0/82.3	35-45 gusting to 55	Depression
10.09.24/1730	22.3/81.3	25-35 gusting to 45	Well Marked Low Pressure Area

Spatial rainfall distribution: Isolated: <25%, A few: 26-50%, Many: 51-75%, Most: 76-100%

Rainfall amount (mm): Heavy rain: 64.5 – 115.5, Very heavy rain: 115.6 – 204.4, Extremely heavy rain: 204.5 or more.

Warnings:

(i) Rainfall warning

Chhattisgarh: Light to moderate rainfall at most places is likely with **heavy to very heavy rainfall** at a few places and **extremely heavy rainfall** at isolated places on 10th and **heavy rainfall** at isolated places on 11th September.

East Madhya Pradesh: Light to moderate rainfall at most places is very likely with **heavy to very heavy rainfall** at a few places with **extremely heavy falls** at isolated places on 10th and **heavy to very heavy rainfall** on 11th September.

West Madhya Pradesh: Light to moderate rainfall at many places is likely with **heavy to very heavy rainfall** at isolated places on 10th & 11th September.

Vidarbha: Light to moderate rainfall at most places is likely with **heavy to very heavy rainfall** at a few places on 10th and heavy rainfall at isolated places on 11th September.

South Uttar Pradesh: Light to moderate rainfall at many places is likely with **heavy to very heavy rainfall** at isolated places on 10th & 11th September.

Odisha: Light to moderate rainfall at most places is very likely with **heavy rainfall** at isolated places over interior Odisha on 10th September.

Jharkhand: Light to moderate rainfall at most places is very likely with **heavy rainfall** at isolated places over South Jharkhand on 10th September.

(ii) Wind warning

Squally weather with wind speed reaching 40-50 kmph gusting to 60 kmph is likely over north Chhattisgarh and adjoining interior districts of Odisha on 10th September. It will decrease gradually thereafter.

(iii) Flash Flood Guidance: (Graphics Attached)

24 hours Outlook for the Flash Flood Risk (FFR) till 0530 IST of 11-09-2024 :

Low to Moderate flash flood risk likely over few watersheds & neighbourhoods of following Met Sub-divisions during next 24 hours

Chhattisgarh - Baloda Bazar, Bastar, Bijapur, Bilaspur, Dantewara, Durg, Janjgir_Champa, Jashpur, Korba, Mungeli, Narayanpur, Rajnandgaon, Sukma and Surguja districts.

East Madhya Pradesh - Anuppur, Balaghat, Chhindwara, Damoh, Dindori, Katni, Mandla, Narshimpura, Panna, Seoni, Shahdol and Umaria districts.

Vidarbha - Bhandara, Chandrapur, Gadchiroli, Gondiya and Nagpur districts.

Surface runoff/ Inundation may occur at some fully saturated soils & low-lying areas over area of concern as shown in map due to expected rainfall occurrence in next 24 hours.

(iv) Impact Expected (Chhattisgarh, Madhya Pradesh, Vidarbha, south Uttar Pradesh, interior Odisha and south Jharkhand due to heavy rainfall and squally wind)

- ✓ Localized Flooding of roads, water logging in low lying areas and closure of underpasses mainly in urban areas of the above region.
- ✓ Occasional reduction in visibility due to heavy rainfall.
- ✓ Reduction of visibility over sea and adjoining coastal areas due to sea spray induced by strong wind and heavy rainfall.
- ✓ Disruption of traffic in major cities due to water logging in roads leading to increased travel time.
- ✓ Minor damage to kutcha roads.
- ✓ Possibilities of damage to vulnerable structure.
- ✓ Localized Landslides/Mudslides/landslips/mud slips/land sinks/mud sinks.
- ✓ Damage to horticulture and standing crops in some areas due to inundation.
- ✓ It may lead to riverine flooding in some river catchments (for riverine flooding please visit Web page of CWC)

Spatial rainfall distribution: Isolated: <25%, A few: 26-50%, Many: 51-75%, Most: 76-100%

Rainfall amount (mm): Heavy rain: 64.5 – 115.5, Very heavy rain: 115.6 – 204.4, Extremely heavy rain: 204.5 or more.

(v) Action Suggested (Odisha, Chhattisgarh, Madhya Pradesh, Vidarbha, south Uttar Pradesh and Jharkhand due to heavy rainfall)

- ✓ Judicious regulation of surface transports including railways and roadways.
- ✓ Check for traffic congestion on your route before leaving for your destination.
- ✓ Follow any traffic advisories that are issued in this regard.
- ✓ Avoid going to areas that face the water logging problems often.
- ✓ Avoid staying in vulnerable structure.

(vi) Agromet advisories for Heavy Rainfall likely over various parts of the country

- ✓ Provide mechanical support to horticultural crops & staking to vegetables.
- ✓ Keep the harvested produce at safer place.

Rainfall recorded during 0830 hrs IST of yesterday- 0530 hours IST of 10-09-2024 (in cm)

Chhattisgarh: Balod 15, Kanker 11, Rajnandgoan 11, Sukma 10, Mahasamund 9, Kondagoan 8, Narayanpur 7, Jagdalpur-7; Raipur-6

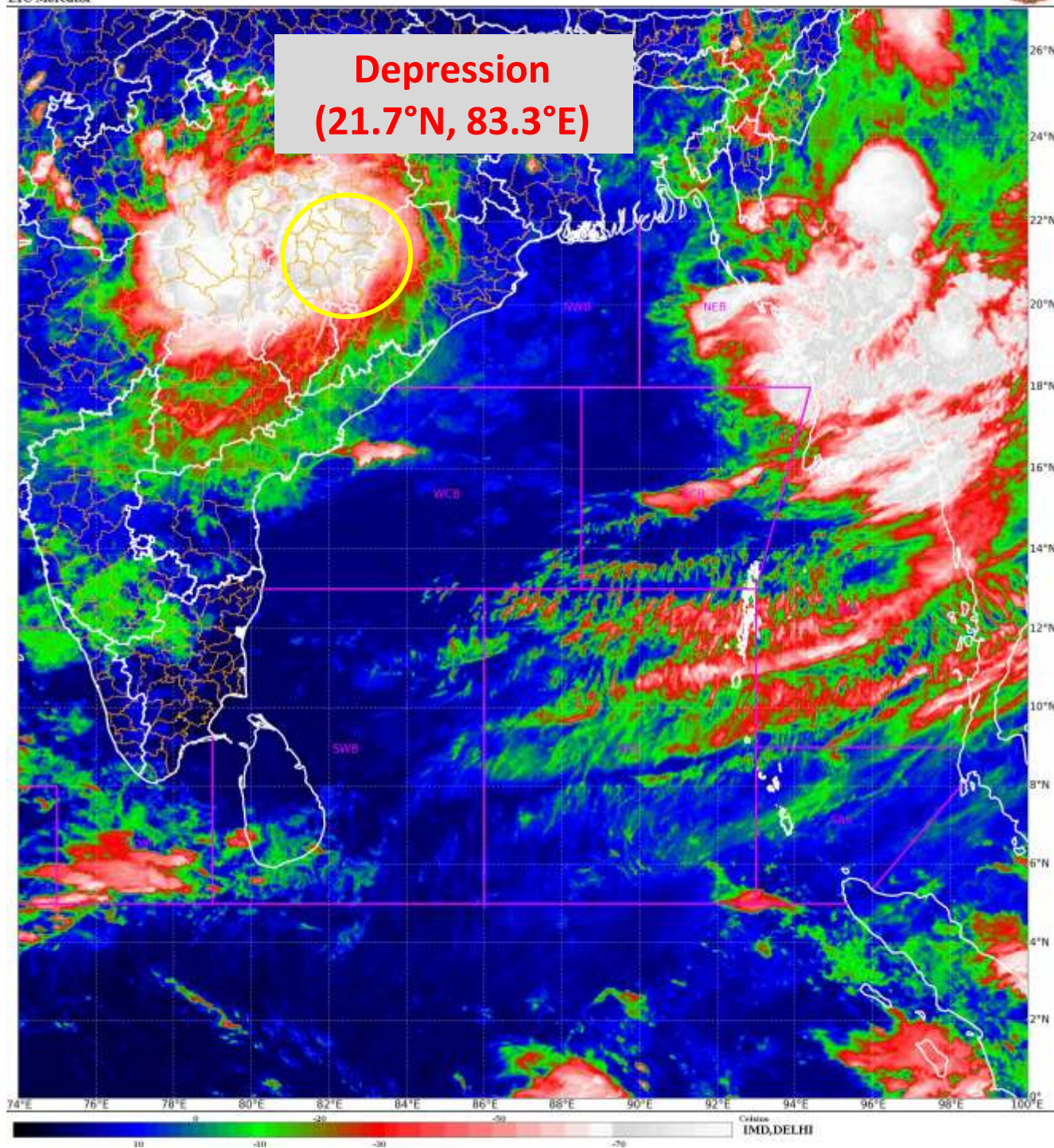
Jharkhand: Ranchi-3

Odisha: Jharsuguda-2

The next bulletin will be issued at 1130 hrs IST of 10th September, 2024.

(Dr. Shashi Kant)
Scientist- D, RSMC, New Delhi

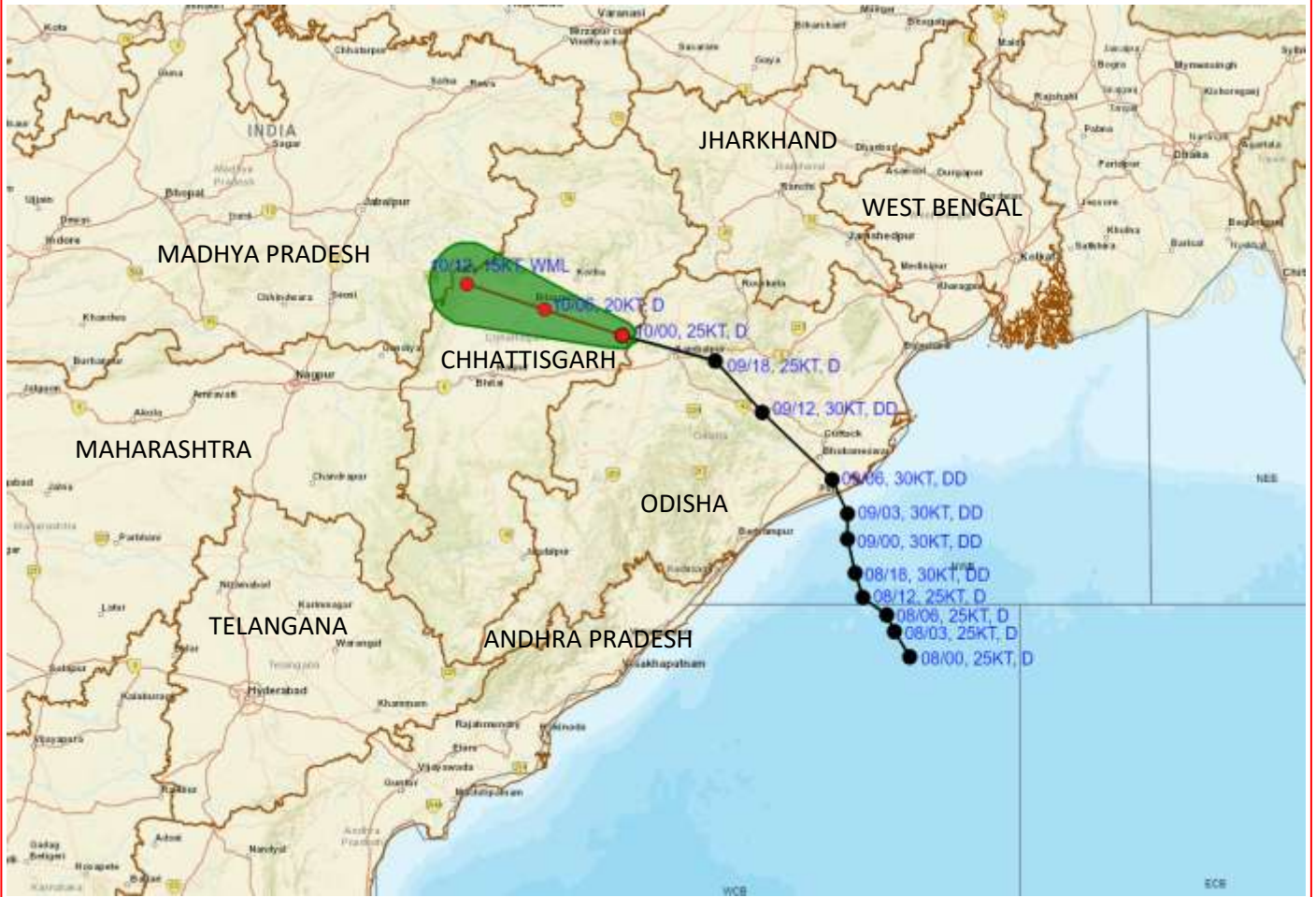
*Copy to: CRS, Pune/ACWC Kolkata/ACWC Chennai/CWC Bhubaneswar/CWC
Visakhapatnam/MO Port Blair/MC Raipur/MC Ranchi/MC Hyderabad/MC Amaravati*



Spatial rainfall distribution: Isolated: <25%, A few: 26-50%, Many: 51-75%, Most: 76-100%
Rainfall amount (mm): Heavy rain: 64.5 – 115.5, Very heavy rain: 115.6 – 204.4, Extremely heavy rain: 204.5 or more.



OBSERVED AND FORECAST TRACK OF DEPRESSION OVER NORTH CHHATTISGARH AND ADJOINING INTERIOR ODISHA BASED ON 0000 UTC (0530 IST) OF 10th SEPTEMBER, 2024.

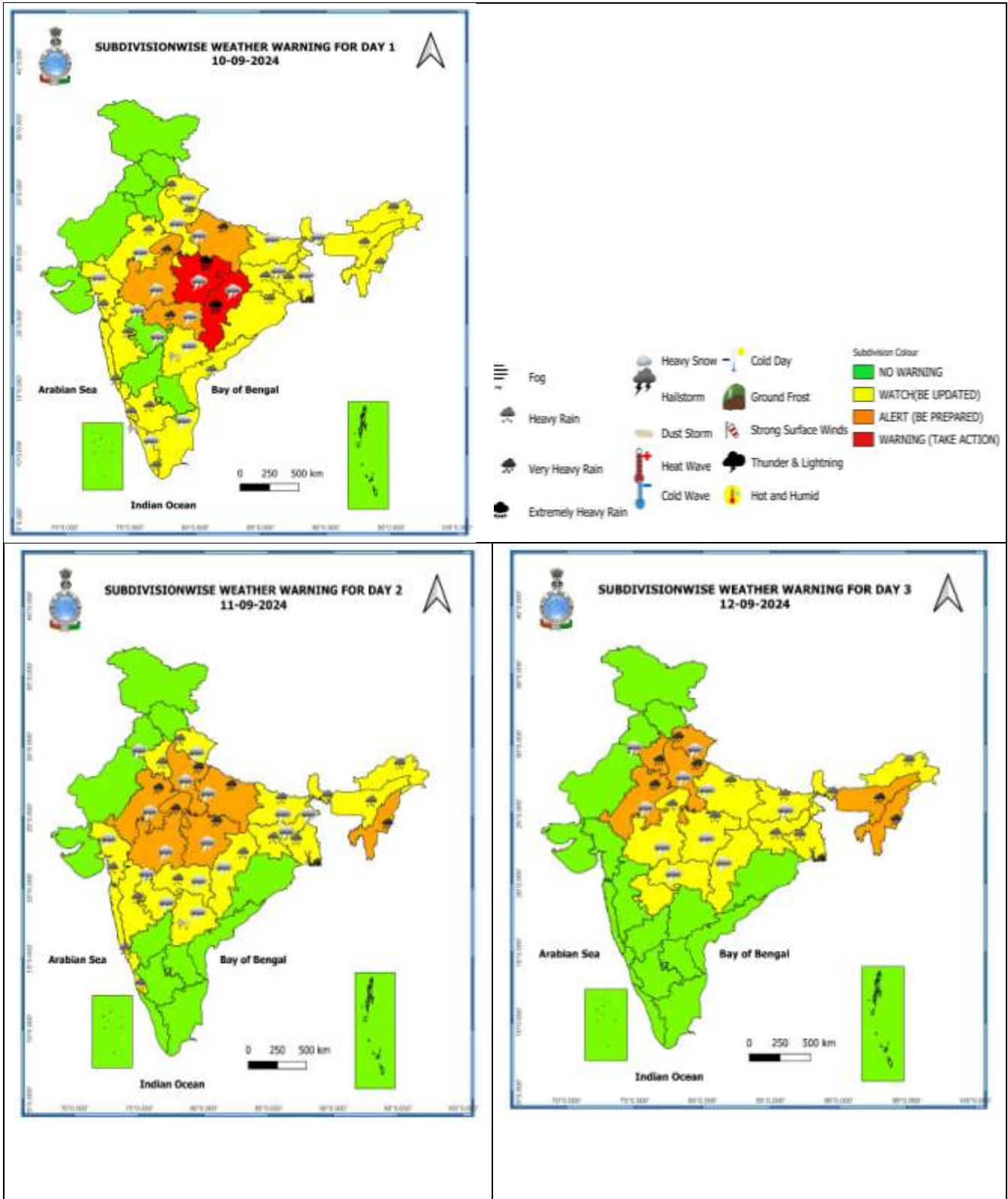


DATE/TIME IN UTC
 IST=UTC + 0530
 L: LOW PRESSURE AREA
 WML: WELL MARKED LOW PRESSURE AREA
 D: DEPRESSION (17-27 KT)
 DD: DEEP DEPRESSION (28-33 KT)
 CS: CYCLONIC STORM (34-47 KT)
 SCS: SEVERE CYCLONIC STORM (48-63KT)
 VSCS: VERY SEVERE CYCLONIC STORM (64-89 KT)
 ESCS: EXTREMELY SEVERE CYCLONIC STORM (90-119 KT)
 SuCS: SUPER CYCLONIC STORM (≥ 120 KT)

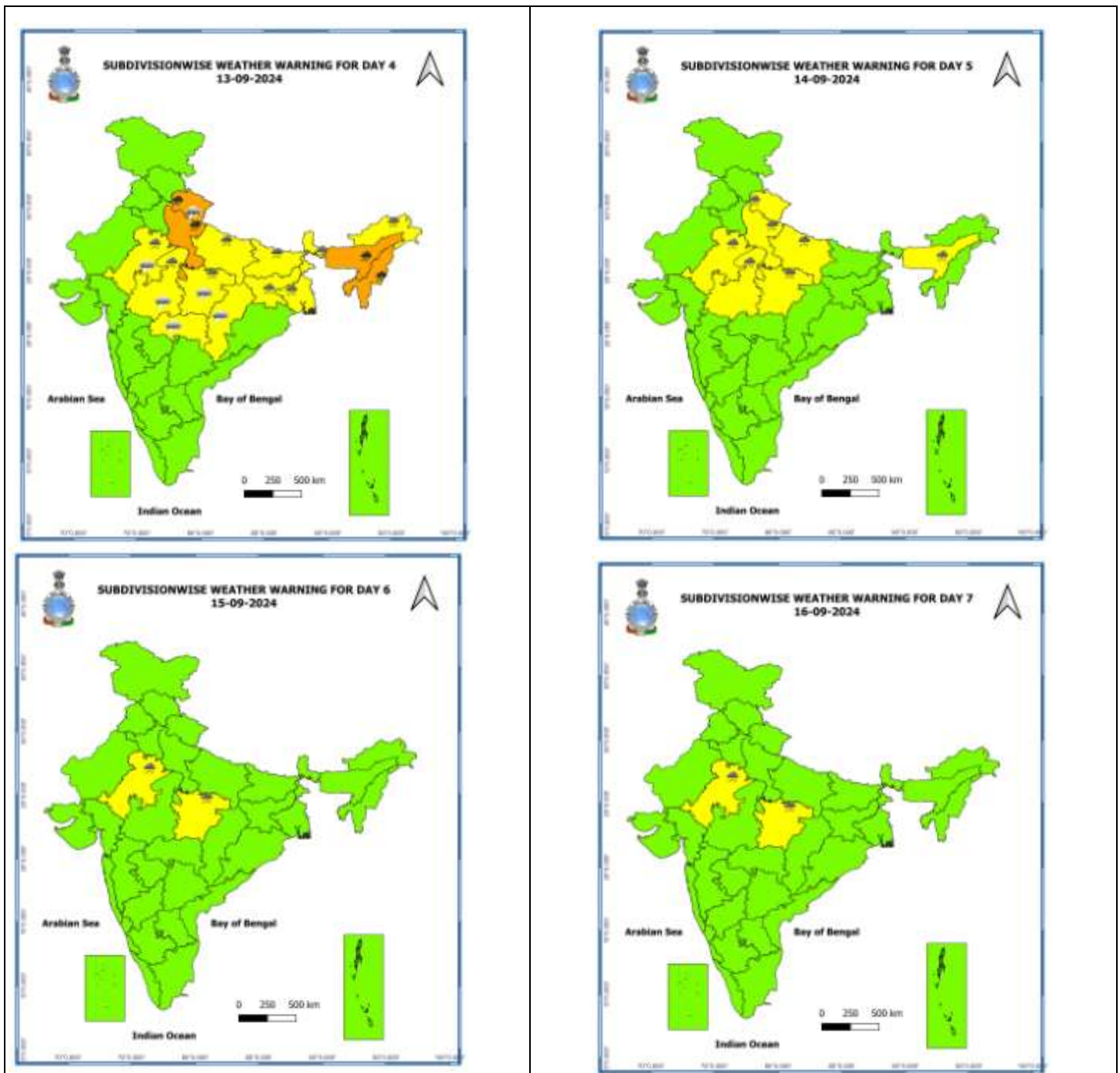
- LESS THAN 34 KT
- 34-47 KT
- ≥ 48 KT
- OBSERVED TRACK
- FORECAST TRACK
- CONE OF UNCERTAINTY

Spatial rainfall distribution: Isolated: <25%, A few: 26-50%, Many: 51-75%, Most: 76-100%
 Rainfall amount (mm): Heavy rain: 64.5 – 115.5, Very heavy rain: 115.6 – 204.4, Extremely heavy rain: 204.5 or more.

Warning Graphics



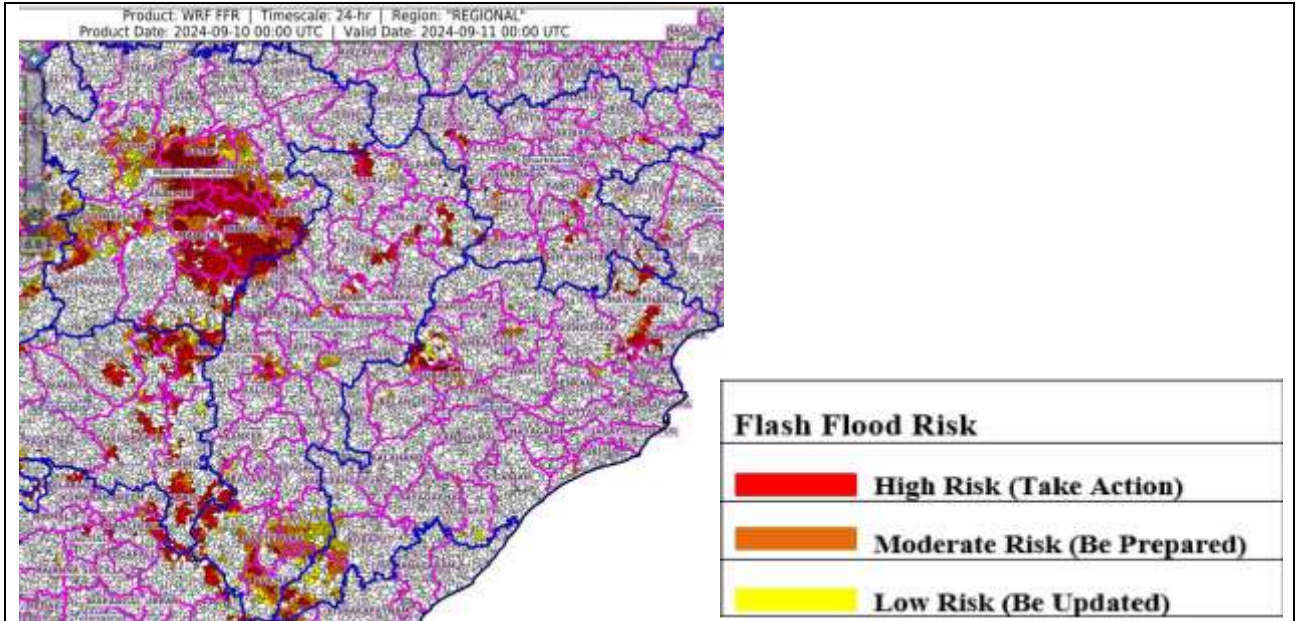
Spatial rainfall distribution: Isolated: <25%, A few: 26-50%, Many: 51-75%, Most: 76-100%
Rainfall amount (mm): Heavy rain: 64.5 – 115.5, Very heavy rain: 115.6 – 204.4, Extremely heavy rain: 204.5 or more.



- Action may be taken based on **ORANGE AND RED** COLOUR warnings.
- Vulnerable regions likely urban and hilly areas action may be initiated for heavy rainfall warning.
- As the lead period increases forecast accuracy decreases.

Spatial rainfall distribution: Isolated: <25%, A few: 26-50%, Many: 51-75%, Most: 76-100%
 Rainfall amount (mm): Heavy rain: 64.5 – 115.5, Very heavy rain: 115.6 – 204.4, Extremely heavy rain: 204.5 or more.

Flash Flood Guidance



24 hours Outlook for the Flash Flood Risk (FFR) till 0530 IST of 11-09-2024 :

Low to Moderate flash flood risk likely over few watersheds & neighbourhoods of following Met Sub-divisions during next 24 hours

Chhattisgarh - Baloda Bazar, Bastar, Bijapur, Bilaspur, Dantewara, Durg, Janjgir_Champa, Jashpur, Korba, Mungeli, Narayanpur, Rajnandgaon, Sukma and Surguja districts.

East Madhya Pradesh - Anuppur, Balaghat, Chhindwara, Damoh, Dindori, Katni, Mandla, Narshimpura, Panna, Seoni, Shahdol and Umaria districts.

Vidarbha - Bhandara, Chandrapur, Gadchiroli, Gondiya and Nagpur districts.

Surface runoff/ Inundation may occur at some fully saturated soils & low-lying areas over area of concern as shown in map due to expected rainfall occurrence in next 24 hours.

Spatial rainfall distribution: Isolated: <25%, A few: 26-50%, Many: 51-75%, Most: 76-100%

Rainfall amount (mm): Heavy rain: 64.5 – 115.5, Very heavy rain: 115.6 – 204.4, Extremely heavy rain: 204.5 or more.